

NORTH-EAST QUARTER

AUBURN TP.

NORTH-EAST QUARTER

NEWBURY TOWNSHIP

TOWNSHIP

BURTON TP.



BURTON TP.
S
H
I
R
O
W
T
O
W
N
S
H
I
P
M
A
R
I
1
9
5
4
Y
R
O
O
D
L
I
N
E

SCALE 1 in. = 10 ch

MARI, 1954

SEE DETAIL OF AUBURN CORNERS (I-R)

SEE DETAIL OF AUBURN CENTER (I-Q)

TRACT ONE
TRACT TWO

SEC. 3

SEC. 5

SEC. 6

SEC. 4

SEC. 5

TRACT ONE

TRACT TWO

- *1 254-365 W. & I. Bullon
- *2 255-500 J. & L. Franks
- *3 254-310 R. & A. Goff
- *4 257-331 H. & M. Seals o.s.d.a.
- *5 255-443 J. & A. Toth

SEE DETAIL OF AUBURN CENTER (I-Q)

SEE DETAIL OF AUBURN CORNERS (I-R)

MATCH LINE SOUTH-EAST QUARTER

RUSSELL TP. NORTH-WEST QUARTER AUBURN TP. NORTH-WEST QUARTER

B A I N B R I D G E T O W N S H I P



#1. 243-51, 251-566 L. & C. Gorham 2.31 Ac. 2-3
#2. 247-555 J. Milton 2 Ac. 6-3
#3. 247-582 J. & E. Flock 1.01 Ac. 6-3

U.S. 422

TRACT

TRACT ONE
TRACT TWO
MAR. 1, 1954

SCALE 1 in. = 10 ch.

OF CENTER
U.S. 422

NORTH-WEST QUARTER
MATCH LINE

SOUTH-WEST QUARTER

AUBURN T.P.

SOUTH-WEST QUARTER

NORTH-WEST QUARTER
MATCH LINE

B
A
I
N
B
R
I
D
G
E
T
P.



Handwritten notes:
 Harold Rubin
 Mabel M. Rubin
 201-507-3615
 201-507-3615
 201-507-3615
 201-507-3615
 201-507-3615

SCALE 1 IN. = 10 CH.

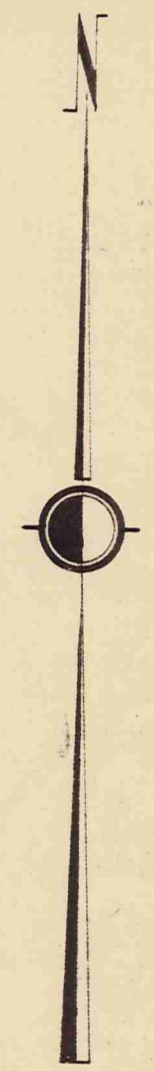
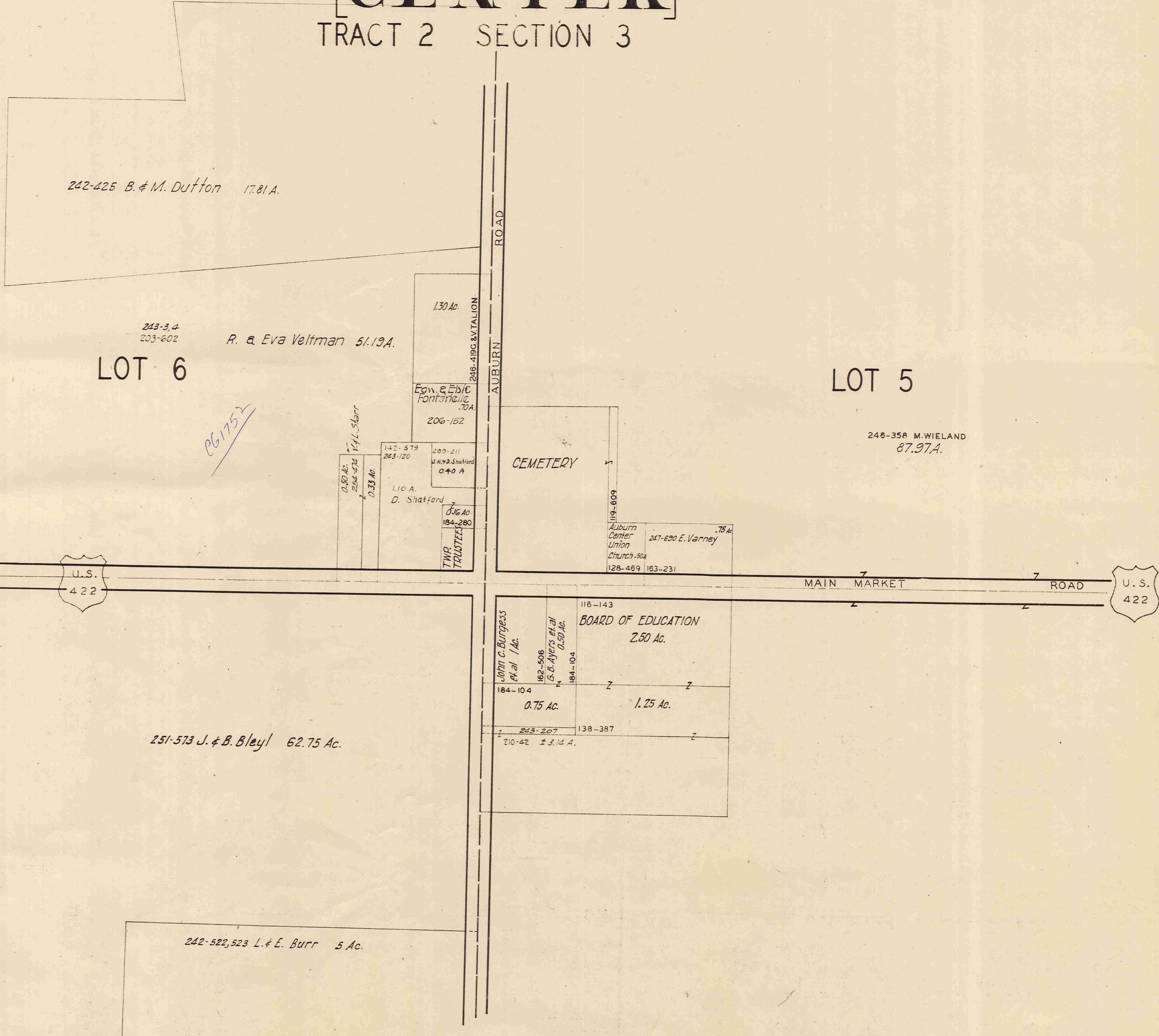
MAR. 1, 1954

I S.W.

AUBURN TP.

[CENTER]

TRACT 2 SECTION 3



SCALE 1in. = 2.5ch. = 165FT.

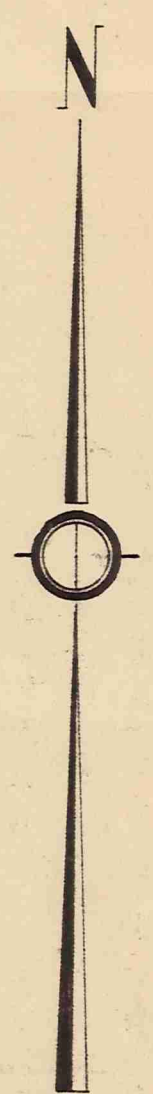
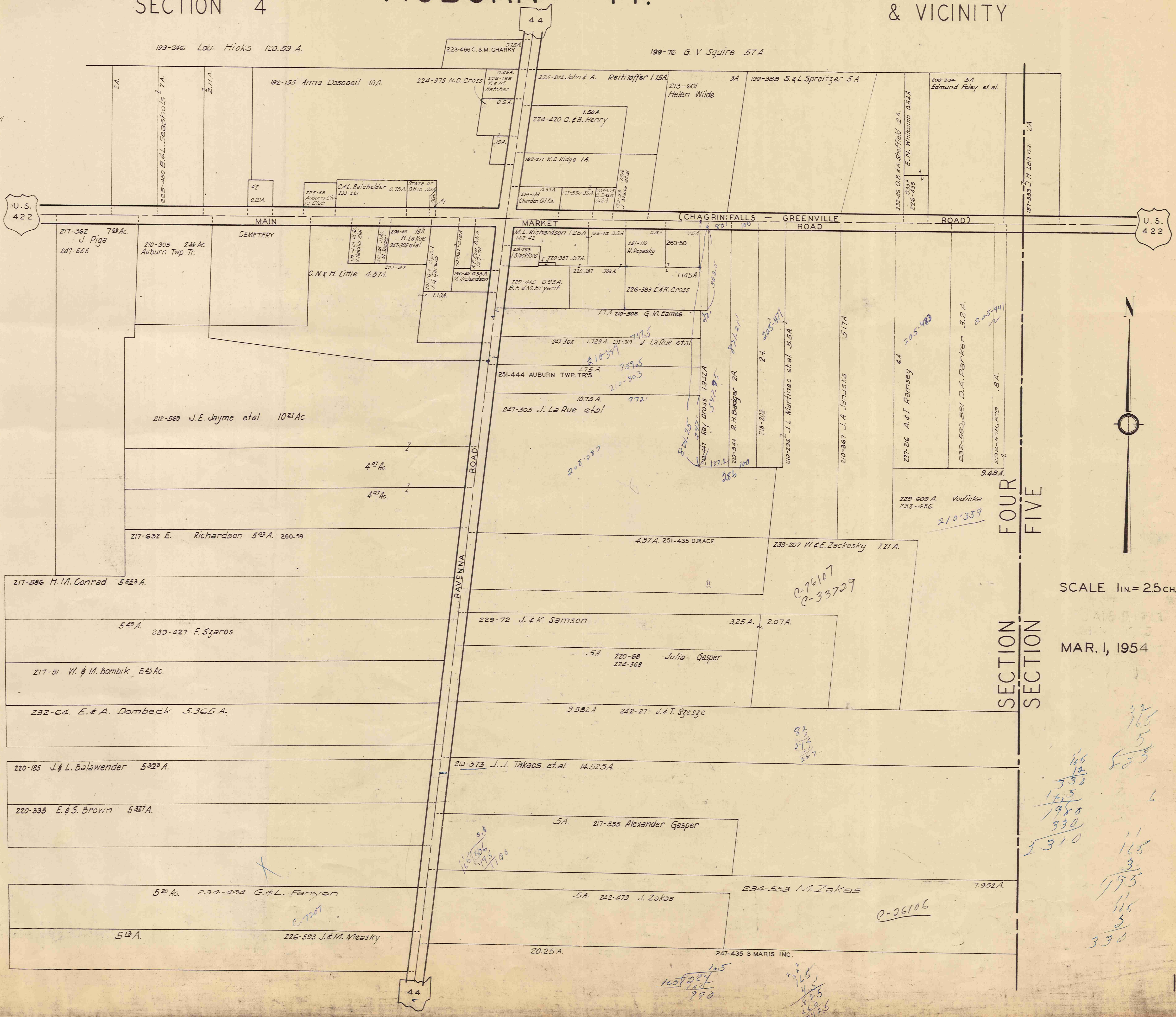
MAR 1, 1954

TRACT 2
SECTION 4

AUBURN TP.

AUBURN CORNERS
& VICINITY

#1. 255-551 J. Wankland
#2. 255-540, 541 L. Kempiski



SCALE 1 in. = 25 ch. = 165 ft.

MAR. 1, 1954

SECTION FOUR
SECTION FIVE

208-430 L. M. Otto 1.62 A.

Handwritten calculations:

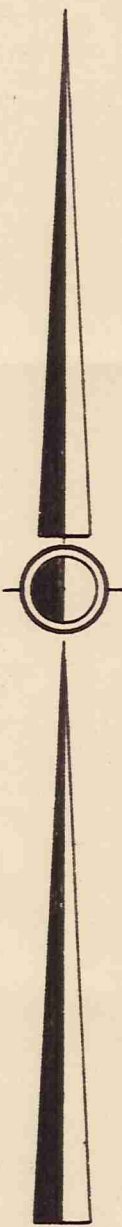
```

32
165
12
358
163
1980
330
3310

115
3
195
115
3
330

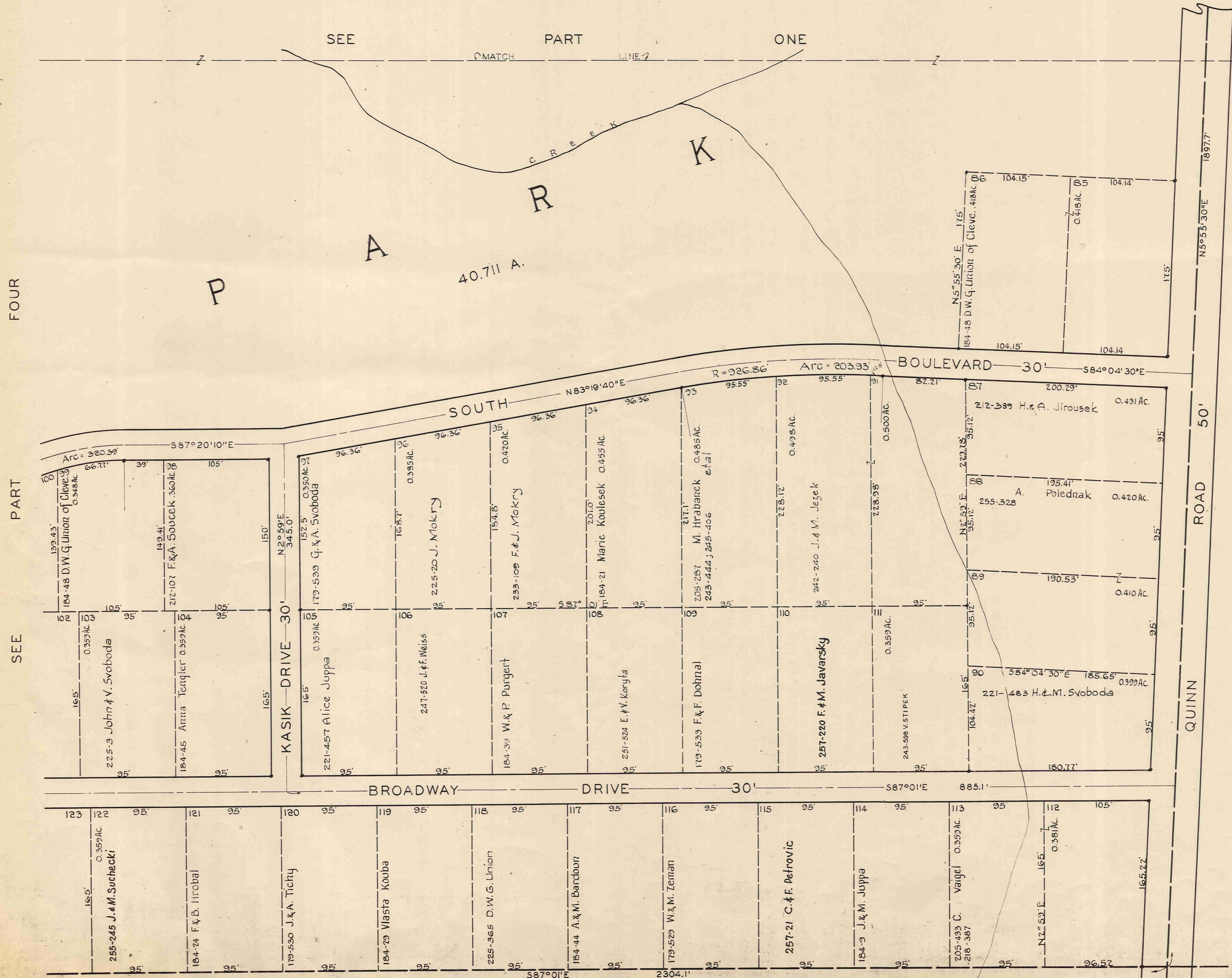
```

I-R



SCALE 1 INCH = 50 FEET

MAR. 1, 1954



SCALE 1 IN. = 50 FT.

MAR. 1, 1954



SEE PART THREE

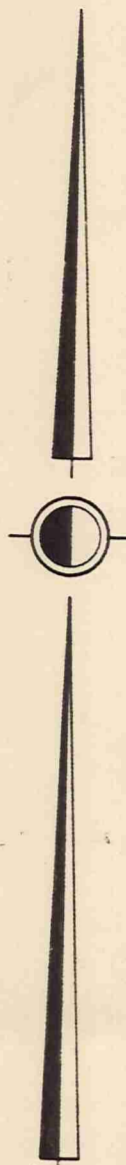
SEE PART THREE

SCALE 1 IN. = 50 FT.

MAR. 1, 1954

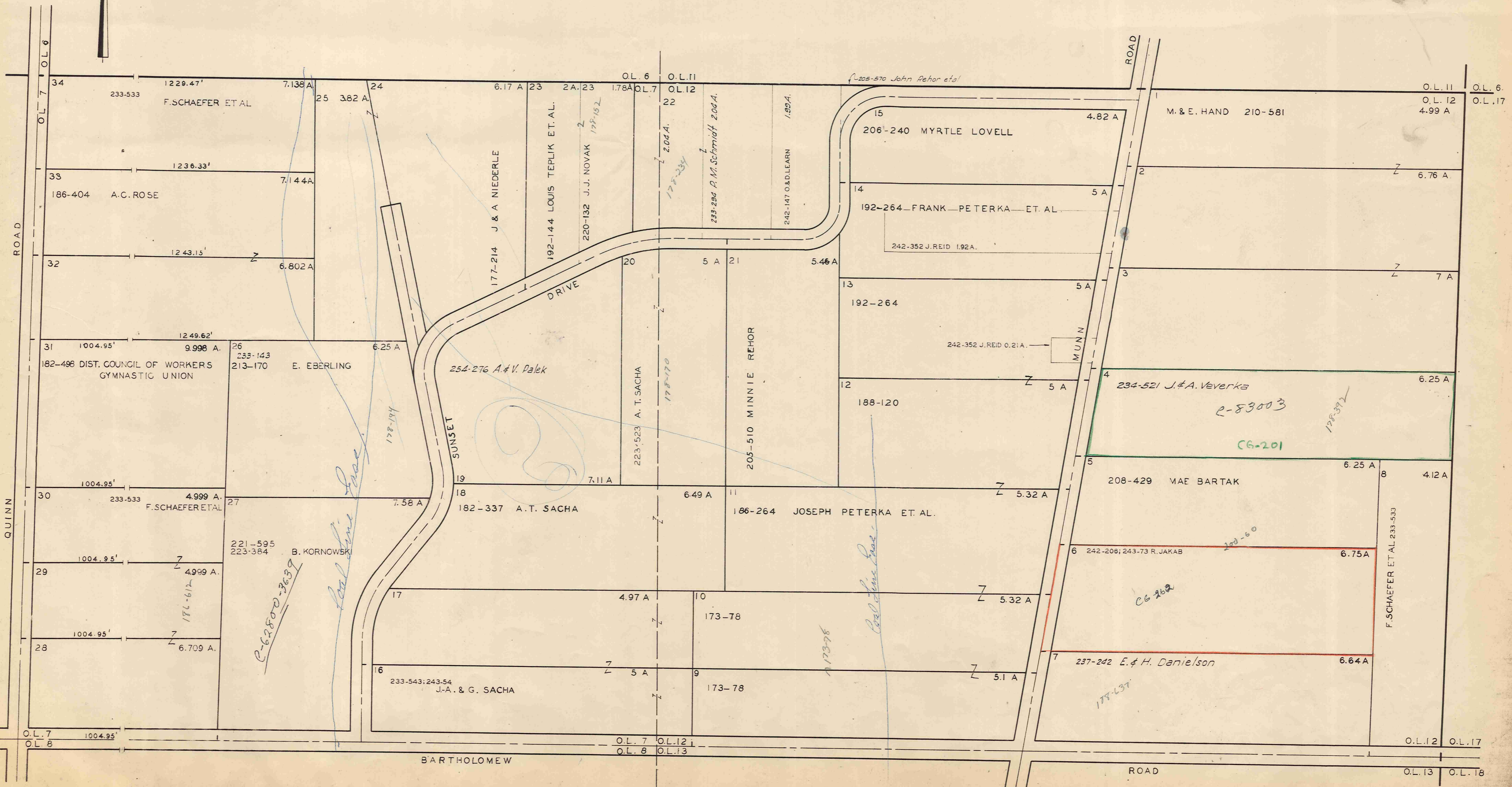


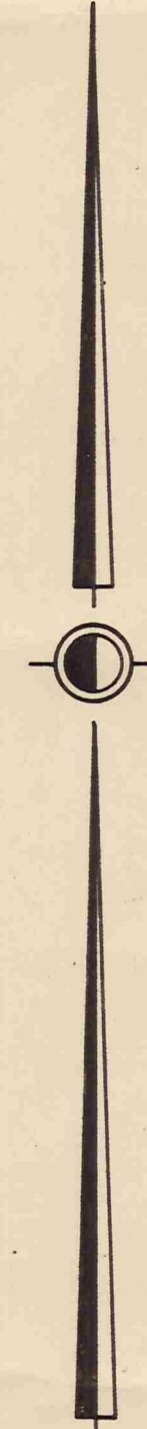
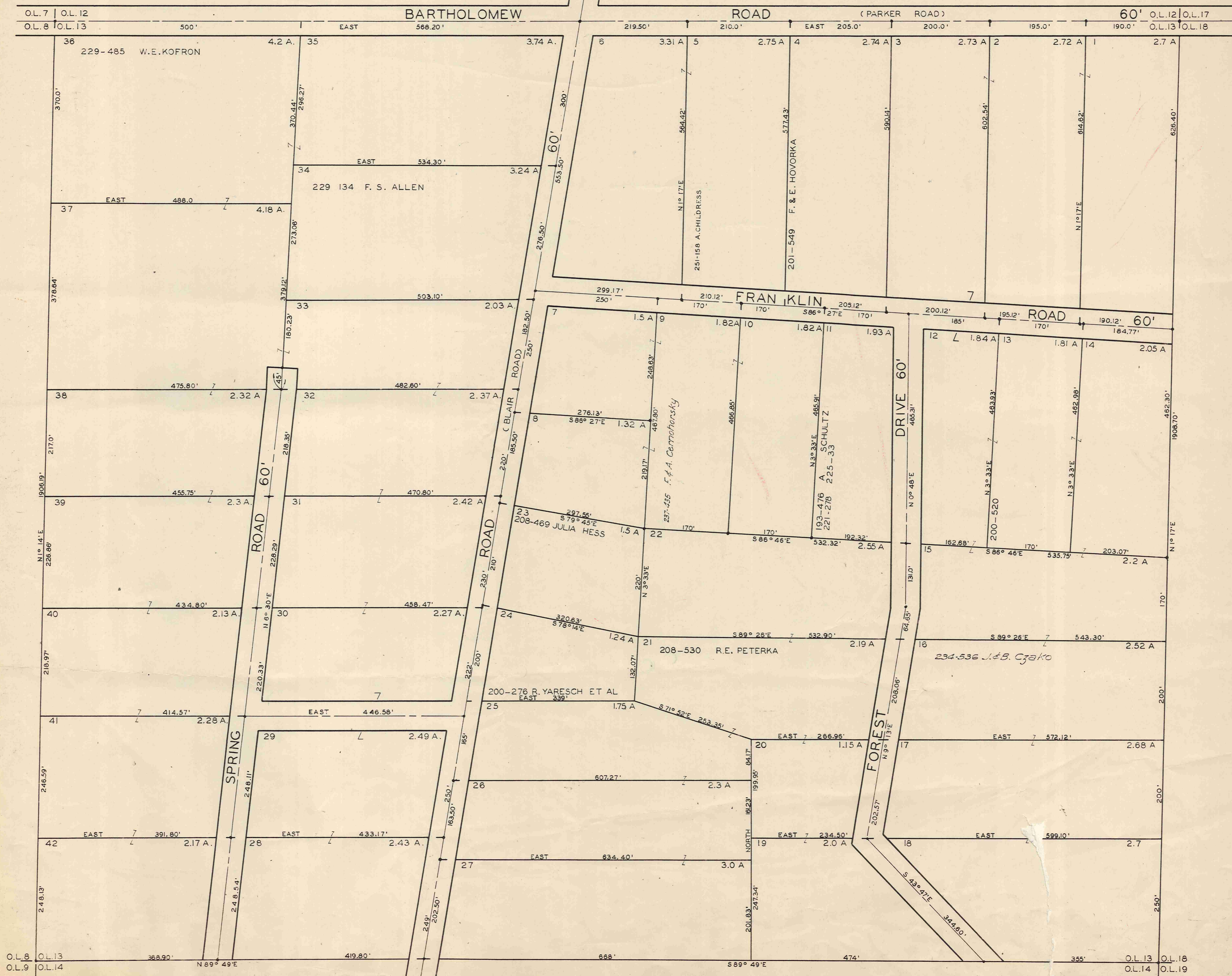
TOWNSHIP BAINBRIDGE



SCALE 1" = 150'

MAR. 1 1954





SCALE 1 INCH = 100 FEET
 MAR 1, 1954

O.L. 7 | O.L. 12 | O.L. 13 | O.L. 17 | O.L. 18
 O.L. 8 | O.L. 13 | O.L. 14 | O.L. 18
 N 89° 49' E